



**TWENTY-FIRST JUDICIAL DISTRICT  
ADMINISTRATIVE ORDER OF THE CHIEF JUDGE 2022-01  
ORDER SUSPENDING JURY CALLS DUE TO COVID-19 PANDEMIC**

Below is the latest information available from Mesa County Public Health regarding COVID-19 in Mesa County:

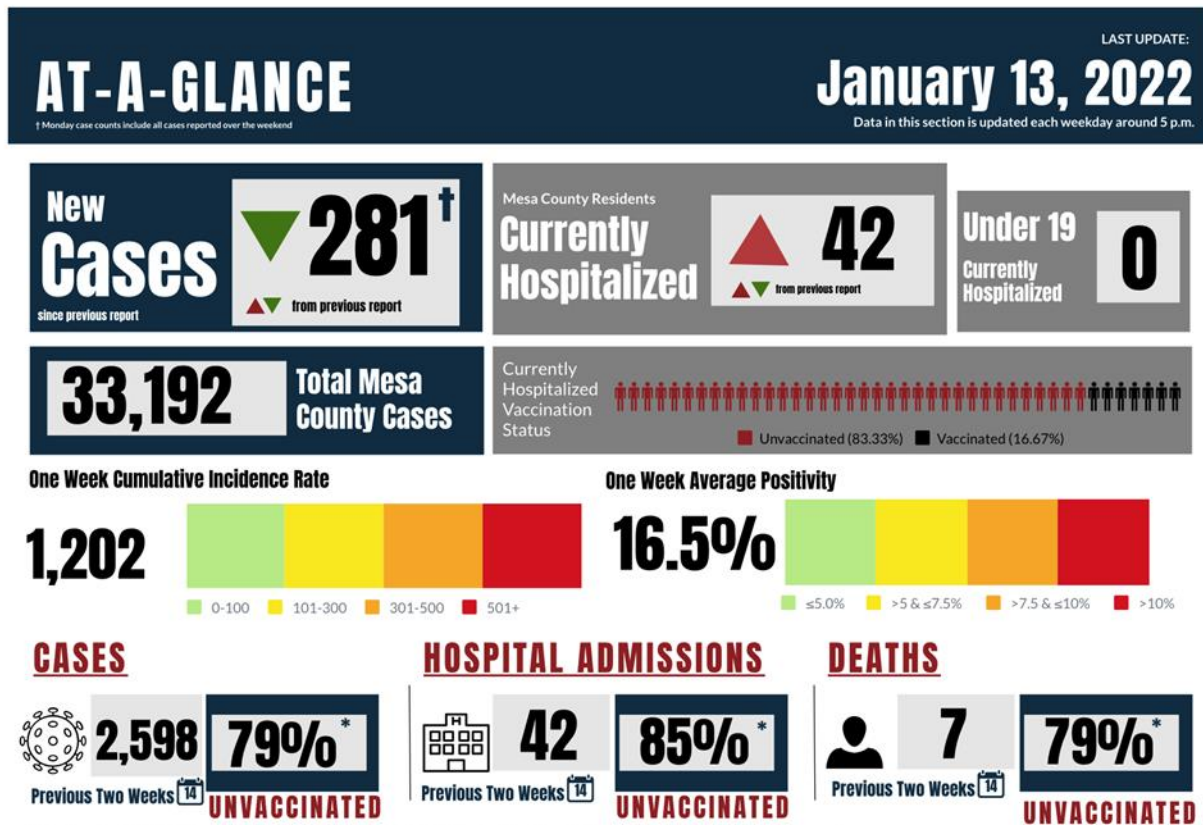
9:05 AM Fri Jan 14 82%

health.mesacounty.us

Recent updates to the dashboard make it easier to understand the state of COVID-19 in Mesa County. Explore the new data dashboard and click the buttons below for an expanded data set with historical information.

[Positivity Trends](#) [Current Case Trends](#)

## COVID-19 Data Dashboard



Vaccination data is from the Colorado Immunization Information System (CIIS). Vaccinated is defined as receiving at least one dose of a COVID-19 vaccine. Because providers have 72 hours to report vaccine administration into the CIIS system, weekly totals may be updated as additional doses are reported.

### Breakthrough Cases of COVID-19

Some people, who are fully vaccinated against COVID-19, will still get sick because no vaccine is 100% effective—these are called breakthrough cases. All COVID-19 vaccines currently available in the United States are very effective at preventing COVID-19 and decrease your chances of severe illness and hospitalization.



During the most recently completed month, the average (mean) age of a breakthrough case was **52 years old**.



Of the total breakthrough cases, **less than 1%** were hospitalized.

**Breakthrough Rate per 10k**

most recently completed week

**62**

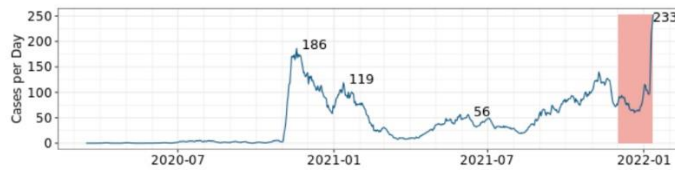
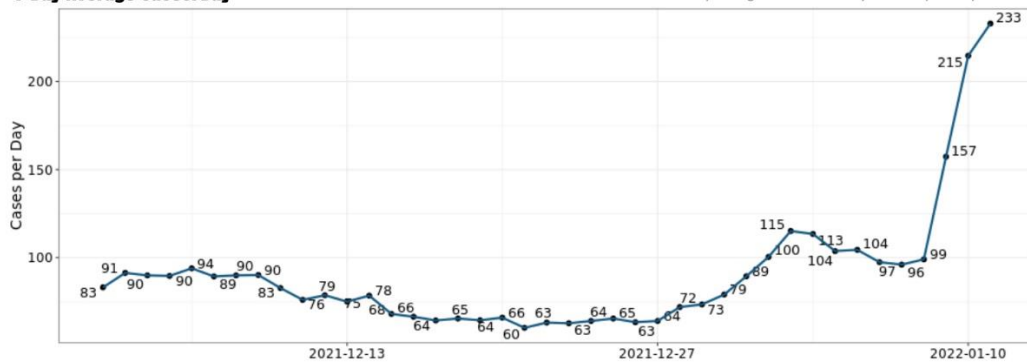
## CASE TRENDS

LAST UPDATE:  
**January 13, 2022**

Data in this section is updated each weekday around 5 p.m.

### 7 Day Average Cases/Day

7 day averages are from Sunday - Saturday of the previous week.



highlighted area shown in detail above

▲ Average cases per day are **increasing**

▲ Compared to this time last year, we are seeing **average cases per day increasing**.

## VACCINE DATA

LAST UPDATE:  
**January 13, 2022**

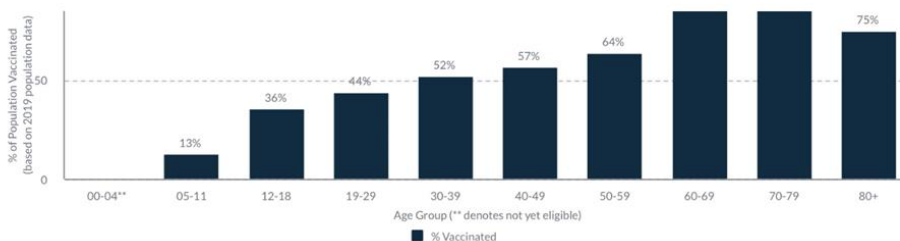
Data in this section is updated each weekday around 5 p.m.

**54%**

**Mesa County Residents have received at least one dose of COVID-19 vaccine.**

Because of expanded eligibility for the 5-11 age group, this number decreased with the data update on Nov 16

### Vaccination Progress by Age



Vaccination data is from the Colorado Immunization Information System (CIIS). Vaccinated is defined as receiving at least one dose of a COVID-19 vaccine. Because providers have 72 hours to report vaccine administration into the CIIS system, weekly totals may be updated as additional doses are reported.

Given the current state of COVID-19 in our community, the judges in this judicial district all agree that we are not currently able to safely assemble a jury venire in the 21<sup>st</sup> Judicial District.

Pursuant to the authority provided to Chief Judges by the Chief Justice of the Colorado Supreme Court through Chief Justice Directive 95-01, *Authority and Responsibility of Chief Judges*, I hereby order that all jury calls in the 21<sup>st</sup> Judicial District be suspended through January 28, 2022.

SO ORDERED this 14<sup>th</sup> day of January 2022.



HON. BRIAN J. FLYNN  
Chief Judge