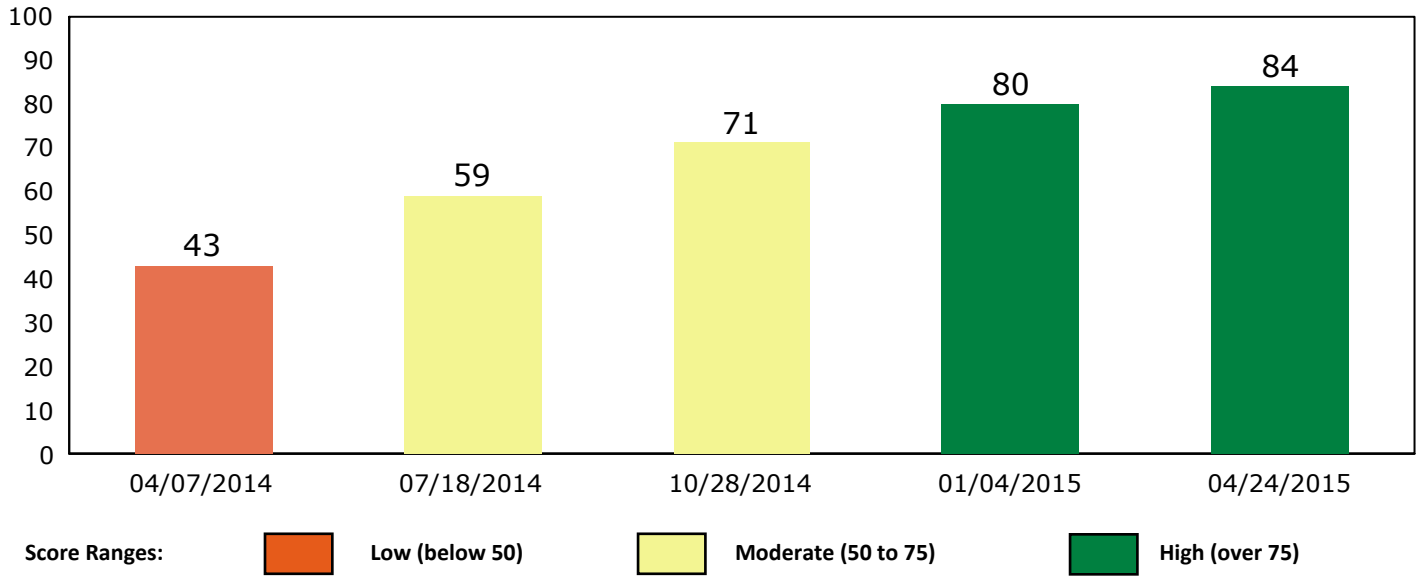


Composite Permanency Rating Summary

Youth Information

Name	Birth Date	Age	Gender	Case ID	Perm Ratings	PRT Meetings
Sample Youth	03/02/1997	18		1707079	5	4

Composite Permanency Rating History



Factor 1. Casey Family Permanency Rating

Apr-15:	Good	Youth is in a family setting that could endure lifelong; a plan is in place to ensure safety and stability are being achieved, youth and caregiver(s) are committed to the plan, and permanency issues are near resolution.
Jan-15:	Fair	Youth is in a family setting that could endure lifelong; a plan is in place to ensure safety and stability are being achieved, youth and caregiver(s) are committed to the plan. OR Youth is in temporary placement, but transition is planned and child is ready to move to identified safe, appropriate, permanent home
Oct-14:	Fair	Youth is in a family setting that could endure lifelong; a plan is in place to ensure safety and stability are being achieved, youth and caregiver(s) are committed to the plan. OR Youth is in temporary placement, but transition is planned and child is ready to move to identified safe, appropriate, permanent home
Jul-14:	Permanency Efforts Initiated	Youth is in a family setting that could endure lifelong and a plan is being developed to achieve safety and stability. OR Youth is in a temporary placement and likelihood of reunification or permanent home is uncertain.
Apr-14:	No Permanency Status	Youth is living in a placement that is temporary, is on runaway status, or in a home that is unacceptable to the child/youth. No realistic or achievable permanency plan has been developed; concurrent permanency plan(s), if any, have stalled or failed.

Composite Permanency Rating Summary

Factor 2. Education Status

Apr-15: Graduated/GED - Pursuing 2-year Degree/Vocational
 Jan-15: Attending - on track for GED/Diploma
 Oct-14: Attending - on track for GED/Diploma
 Jul-14: Attending - not on track
 Apr-14: Frequently Truant, Suspended or Expelled

Factor 3 Employment / Job Skills

Apr-15: Employed Part-time (non-Student)
 Jan-15: Employed Part-time (Student)
 Oct-14: Not applicable - school schedule
 Jul-14: Not applicable - school schedule
 Apr-14: Not applicable - school schedule

Factor 4 Current Placement Status

Apr-15: Independent Living
 Jan-15: Foster
 Oct-14: Foster
 Jul-14: Foster
 Apr-14: Group

Factor 5 Chafee Participation

Apr-15: In program - participating regularly
 Jan-15: In program - participating regularly
 Oct-14: In program - participating regularly
 Jul-14: In program - participating regularly
 Apr-14: Referred - wait listed

Factor 6 Strength of Connections Parents

Apr-15: Weak Infrequent contact; cannot count on this adult for support
 Jan-15: Moderate Some contact but may not be consistent; feels a connection but can't count on all the time
 Oct-14: Moderate Some contact but may not be consistent; feels a connection but can't count on all the time
 Jul-14: Weak Infrequent contact; cannot count on this adult for support
 Apr-14: Very Weak No contact with this person

Factor 7 Strength of Connections Siblings

Apr-15: Strong Contact at least once per month; feels a connection and can usually count on this person
 Jan-15: Strong Contact at least once per month; feels a connection and can usually count on this person
 Oct-14: Strong Contact at least once per month; feels a connection and can usually count on this person
 Jul-14: Strong Contact at least once per month; feels a connection and can usually count on this person
 Apr-14: Strong Contact at least once per month; feels a connection and can usually count on this person

Factor 8 Strength of Connections Other Adults

Apr-15: Very Strong Contact at least once per week; feels a long-term connection; can count on this person to be there for them when needed
 Jan-15: Strong Contact at least once per month; feels a connection and can usually count on this person
 Oct-14: Moderate Some contact but may not be consistent; feels a connection but can't count on all the time
 Jul-14: Moderate Some contact but may not be consistent; feels a connection but can't count on all the time
 Apr-14: Moderate Some contact but may not be consistent; feels a connection but can't count on all the time

Factor 9 Number of Supportive Adults

Apr-15: 3
 Jan-15: 3
 Oct-14: 1
 Jul-14: 1
 Apr-14: 1

Factor 10 Independent Living Skills (current)

Money Mgmt	Housing	Transportation	Health
Intermediate	Advanced	Advanced	Intermediate

Comments on Youth's Progress

04/24/2015 by Lisa Anderson

youth has completed Chafee program and transitioned to his own apartment. He will graduate from high School in May and plans on attending vocational school to pursue a career in the medical field. youth continues to have regular contact with brother and foster mom - who has been a continued support system for youth as he has transitioned to independent living. Youth is employed for second year in Jeffco Open Space summer employment program.

01/04/2015 by Lisa Anderson

Youth now feels for first time that he will remain in emancipation foster home. He has developed a strong connection with family although he is not open to adoption. Youth is still performing well in school and is on track to graduate in 4 months. Chafee program has assisted youth in enhancing his IL skills.

10/28/2014 by Lisa Anderson

With the assistance and support of his foster mother, youth has been able to focus more efforts on school and has improved performance considerably - he is now back on track to graduate in the Spring. He is attending the Chafee program regularly and has frequent contact with his older brother in Nebraska. Chafee program has assisted in developing IL skills.

07/18/2014 by Lisa Anderson

Youth just moved from Smith Group Home to an Emancipation foster home. He is beginning to develop a connection with foster mother. youth will be starting Chafee and will start the emancipation staffing process and will be working this summer in the Jeffco Open Space internship program. Attendance at school has improved, but his is not yet on track to graduate.

04/07/2014 by Lisa Anderson

Youth has been in Smith Group Home for the past 2 years. This has halted his progress in any kind independent living skills. He is not able to do a lot there due to the requirements of the program and the high level of supervision that is required there. Youth has been frequently absent from school and performance is below grade level. Youth has been talking with his sister in Arvada along with his grandmother. This has been going well but youth has stated that he does not want to move back with her or any of his family in OK.

Supportive Connections

Name	Relationship	Comments
Aunt Suzie	Aunt (Maternal)	Aunt Suzie lives in Arizona but has contact with youth frequently and has offered to allow youth to live in her home after emancipation.
Foster Mother	Foster Parent	Susan is willing to be a long-term connection for youth and will be available when needed to provide support. Youth has developed a bond with foster mother.
Joe Sample	Brother (Half)	Older brother Joe (age 22) has continued to be a consistent support for youth - is always available to provide support and may potentially be a placement option in the future.