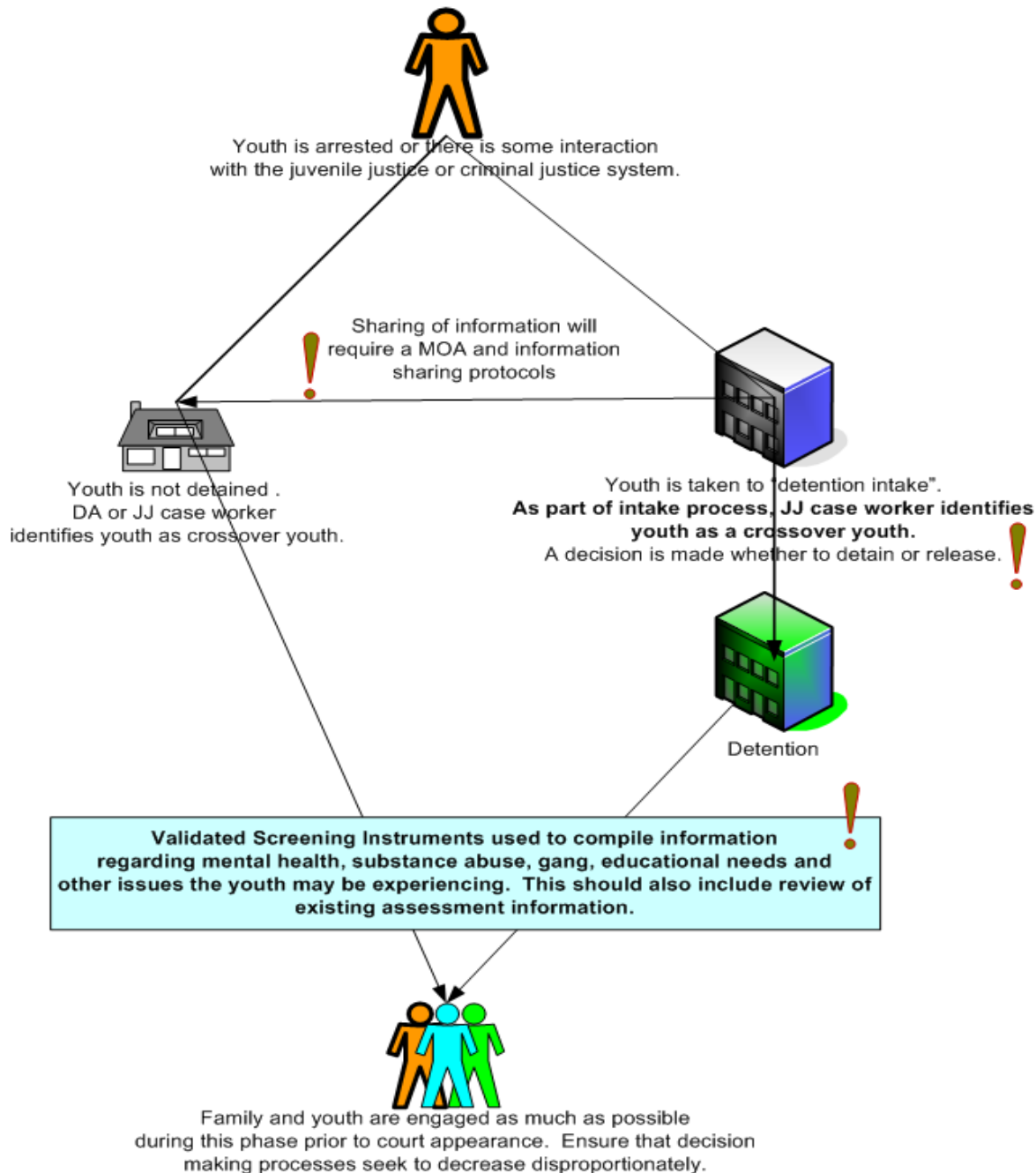


# Denver Implementing the CYPM

## PHASE 1 Practice Area 1 Arrest, Identification and Detention



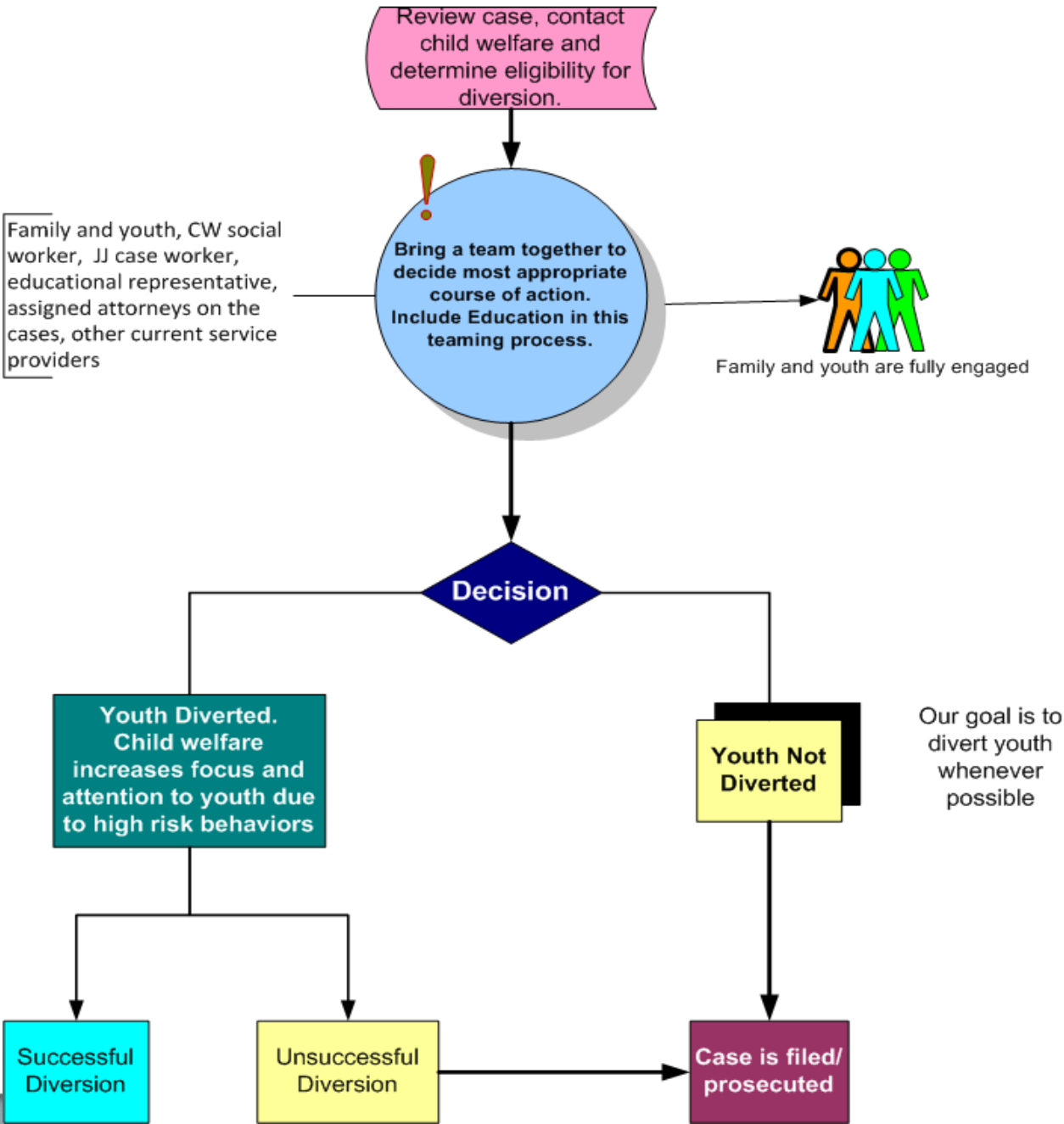
Point of arrest is an area that the CYPM team continues to need to do more outreach. DPD has been engaged, but there is not a system that offers law enforcement a quick way to determine CW involvement at arrest.

For detained youth: Pre-Trial Services (Paramount) Intake unit is identifying if youth has open case for maltreatment with DDHS. Mechanisms in place to contact the Caseworker & GAL. Detention Hearing Worksheet also identifies Crossover youth.

- For youth NOT detained: For **Municipal Court** youth, the docket is sent to DDHS Court Liaison who will look up youth and contact Caseworkers to alert them of the new municipal case. For **District Court** youth, the Liaison will alert the parties at the detention hearing of an open case for maltreatment.
- Once arrested, youth are assessed by JJ using: JDSAG, CJRA pre-screen, and MAYSI-2

Youth and family are interviewed by Pre-Trial for input around what the current environment, behaviors, and issues are.

**PHASE I Practice Area 2**  
**Decision Making Regarding Charges**

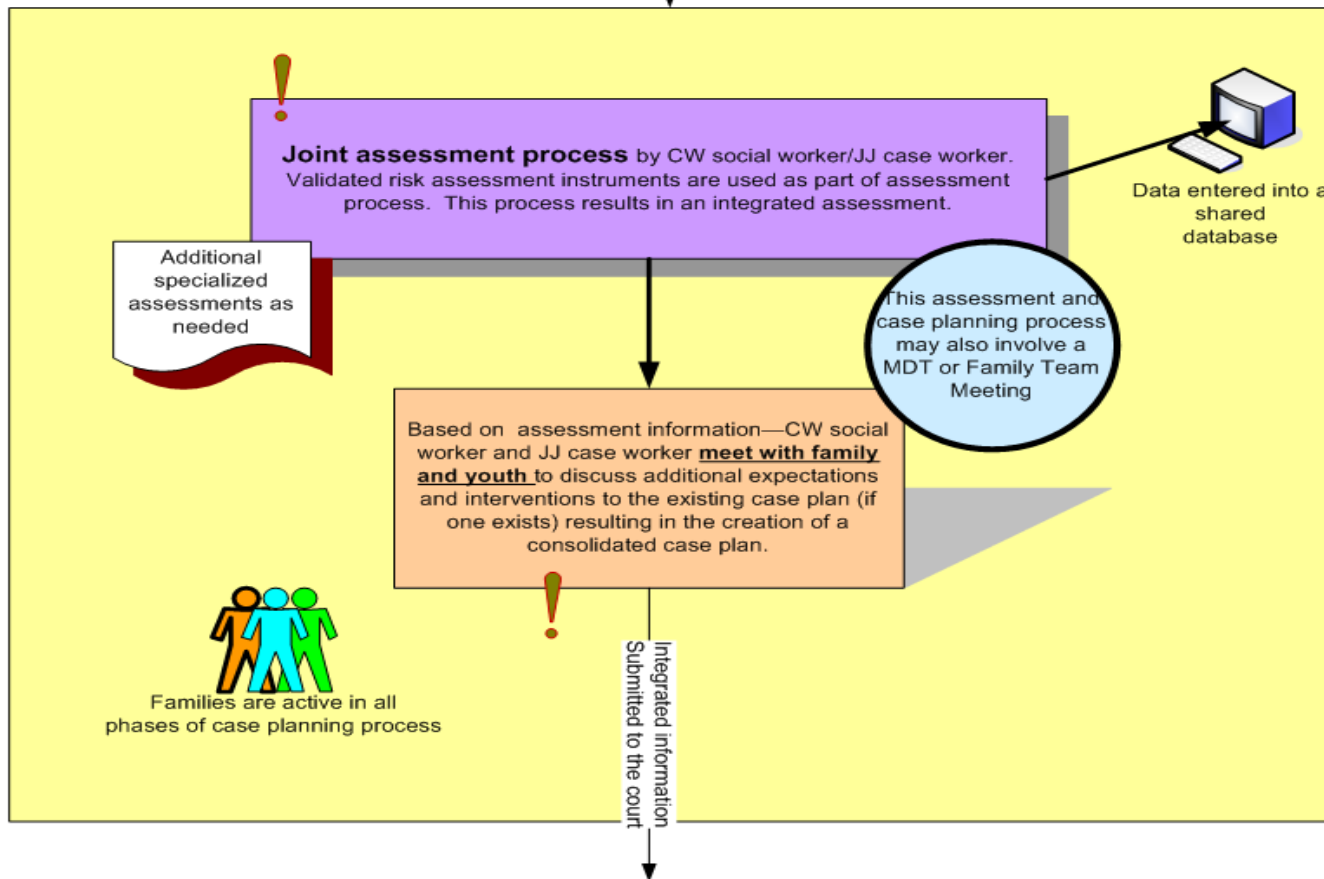
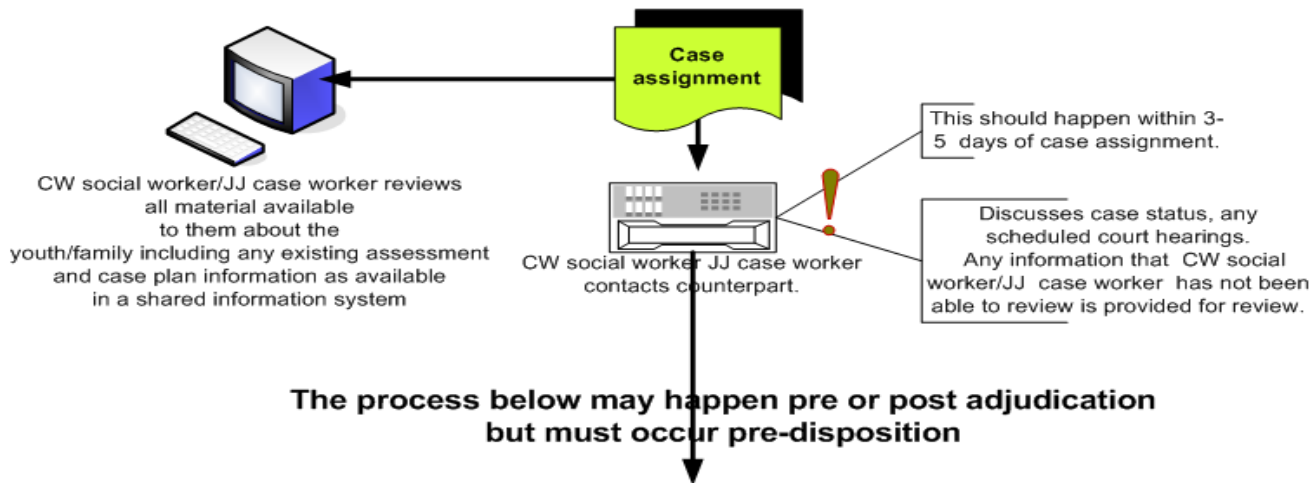


The District Attorney's office is now having all cases identified as Crossover screened by a specific Attorney, this screening can also include consideration for Diversion.

On Crossover cases, youth are referred to ARCH (HB1451) multidisciplinary staffing team for discussion with Caseworker and Juvenile Justice worker on what services will best meet their needs. Family and youth to be included. This is generally in place for youth that are not offered Diversion.

### PHASE 2: Practice Area 3

#### Case Assignment, Assessment and Case Planning



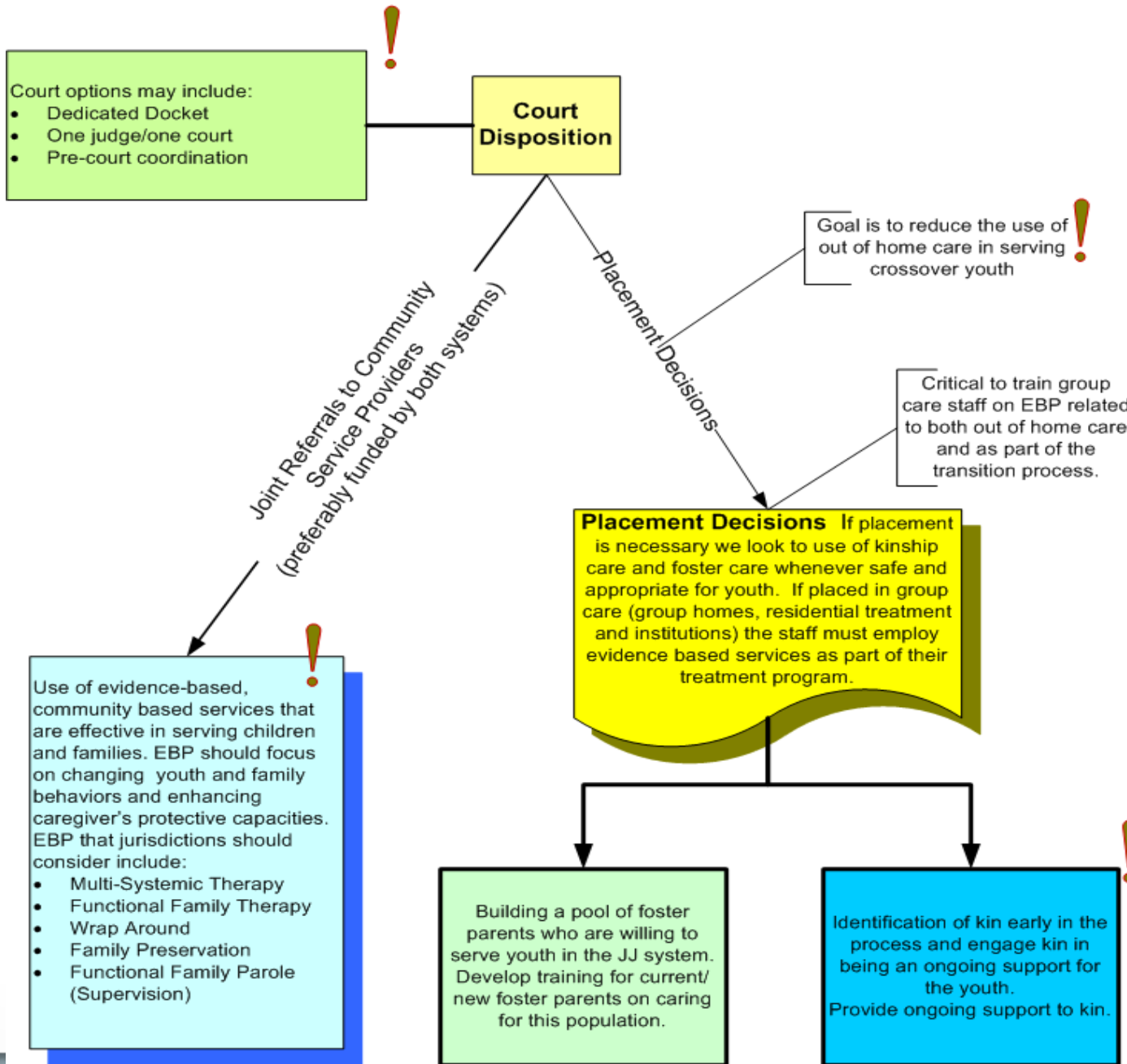
When Probation receives case for PSI, DCP provides DDHS history to PO, and PO is required to make contact or invite the caseworker to attend the interview or get caseworker updates and recommendations.

Policy is currently being drafted for both Probation and DDHS to establish worker expectations and timeframes.

There is currently not an assessment instrument that is common between Probation and DDHS, however the results of assessments are to be shared. \*There remain some obstacles to accessing and sharing information, including education and mental health information, and pertinent information on the maltreatment history.

There are several ways in which families participate in the case planning, including: interviews by assigned worker, or various staffing teams.

**PHASE 2: Practice Area 3 (continued)**  
**Case Assignment, Assessment and Case Planning**

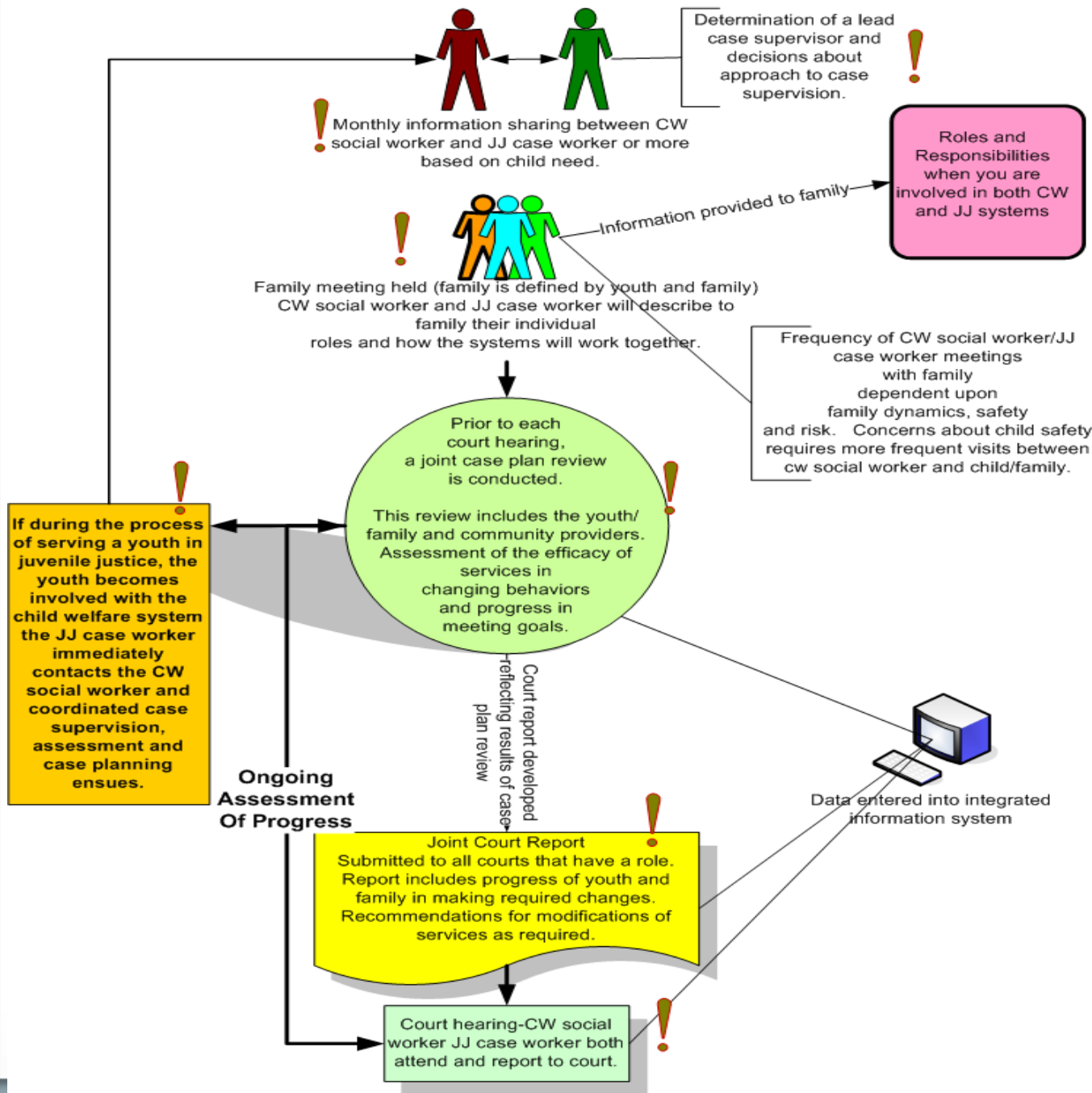


Denver Juvenile Court ensures that delinquency cases will be assigned to the same judge that already has the child welfare case. Whenever possible, the child welfare case and delinquency case will be heard together and are marking their files to identify a case as crossover.

Denver widely uses evidence-based services for Crossover Youth, through Probation, DDHS, mental health services, and Blended Funding with SB94 and DCP.

MDT's are used to help coordinate case plans, engage the family in decision-making, inform parties of Crossover issues, and strive to place in least restrictive environment. The use of Relative Affidavits and Diligent searches for kin placements is also increasing for Crossover Youth.

**PHASE 3: Practice Area 4**  
**Coordinated Case Supervision and Ongoing Assessment**



Meetings are occurring between Probation and DDHS supervisors. They are working to establish formalized policies for both agencies.

### PHASE 3: Practice Area 5

## Planning for Youth Permanency, Transition and Case Closure

Denver has a number of initiatives regarding permanency for youth:

1. Permanency Roundtables
2. Benchmark Hearings
3. HB 1255 Permanency Plan development for committed youth
4. Coordination with DYC for emancipating crossover youth

Transitional planning begins at the point of placement. This work involves ensuring that youth do not enter child welfare solely due to absence of an appropriate adult who is willing to care for them.

